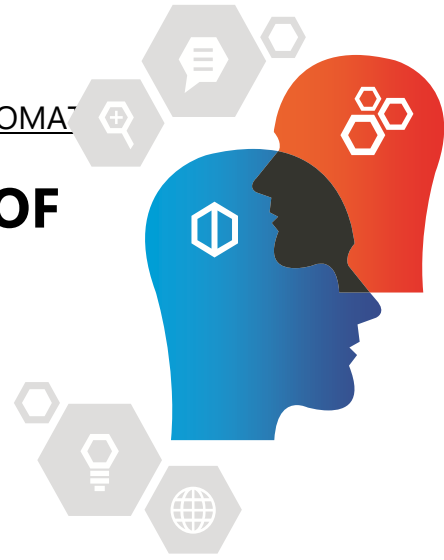


EXA SYSTEMS AND ITS ECOSYSTEM OF PARTNERS SUPPORT YOU IN THE ANALYSIS AND DIAGNOSIS OF YOUR SUPPLY CHAIN.



Optimal Integration of the Supply Chain and automation

In a global market, it is crucial to distinguish oneself from the competition; more and more, customers are basing their choices on customer service over cost and quality.



Supply chain and automation EXA's consultants have been working in supply chain management for many years. They have acquired experience from a variety of businesses in many sectors. If you want to increase your productivity and performance with respect to logistics, our consultants can assist you in establishing better business practices within your company.

They add value to your work organization by clearly identifying elements and areas with high operational costs and inefficiencies. With your collaboration, our consultants build a strategic plan leading to better performance. While taking into account your present needs, they will also create a long-term vision for better logistics.

OPTIMAL INTEGRATION OF THE SUPPLY CHAIN AND AUTOMATION

Our consultants' recommendations regarding your organizational evolution are made in steps, which greatly facilitates their integration.

Evidently, EXA's consultants are well informed about the many performance and productivity enhancing technologies used in the logistic industry. They can help you optimize the use of these tools, update existing solutions and execute pilot-projects tests.

WAREHOUSE

- Evaluation of the site for wireless networking
- Evaluation of updates for existing technology
- Analysis of methods for product reception
- Analysis of packaging operations and product shipping
- Analysis of product identification methods
 - Label printing
 - RFID tags
 - Printing automation
- Analysis of warehouse management and operations
- Analysis of ordering processes
- Feasibility analysis and pilot-projects for RFID tagging

AUTOMATION

- Labeler, Print and Apply
- Vision for Identification and Inspection
- Rejection Systems
- Static and In-Motion Scales
- Case Erectors, Settlers, Metal Detectors

We place Human in full command of a two-way communication system between industrial equipment and your Enterprise Software.

Our services include Logic, Control and Command:

- PLC programming
- OPC server programming
- Database programming
- Exchange Table to Enterprise Software

OPTIMAL INTEGRATION OF THE SUPPLY CHAIN AND AUTOMATION

OUR DIAGNOSTIC SERVICES



- **Supply Chain performance measures:** Implementing channel-spanning performance indicators. Measuring order fulfilment and customer profitability between partners.
- **Customized logistics network:** Implementation of a logistics network to serve specific customer segments, requirements and geographical regions. Client segmentation and analysis of individual profitability, adaptation of a strategy to balance service with profitability.
- **Activity-based costing:** Precise process mapping of logistics operations. Identification of cost and resource drivers. Business modelling, benchmarking of model. Development of decision models to perform product costing, client costing and sensitivity analysis.
- **Collaborative forecast planning:** Integration of planning processes through the entire supply chain. Sharing of sales and forecasting information through initiatives like Vendor Managed Inventory. Challenging the current manufacturing and transformation locations to reduce the demand variation sensitivity. Postponement of the ultimate transformation point in the supply chain.
- **Strategic sourcing:** Performing 'make or buy' analysis of non-core activities. Development of partnerships with principal suppliers. Supply models, analysis of purchasing policies, algorithms, forecasting and demand methods.
- **Purchasing practices:** Analysis of demand pattern and suppliers' practices to minimize product handling. Implementation of drop-shipment practices and ordering quantity re-evaluation. Implementation of total cost practices to incorporate warehousing costs into volume deals. Establishment of supplier performance program.
- **Integrated technology:** Recognizing that information required to enhance the supply chain resides outside the company. Facilitating data exchange through e-commerce.