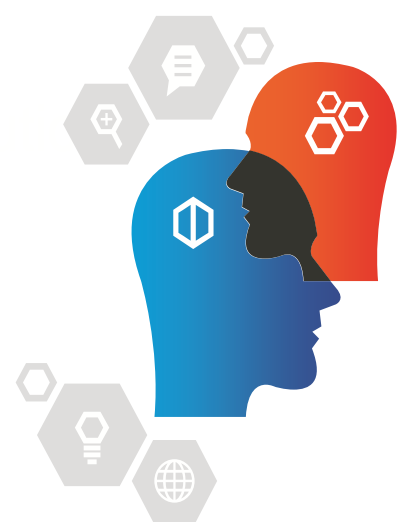


Print & Apply EXCODE Serie Industrial



STURDY DESIGN

The EXCODE's frame and its stand are made of stainless steel and anodized aluminum. They are therefore corrosion resistant and ensure a long life span.

SIMPLICITY

The solutions are simple, for easy integration and ease of operation. It is with simple innovations that we make the difference. Simplicity that translates into design, maintenance and use.

MULTIPLE APPLICATIONS

Whatever the product, **EXA Systems** will do the analysis and will be able to suggest the best way to apply your label. After all, your success depends on it, as does our reputation.



- The **EXCODE** are self-adhesive Print&Apply solutions in stationary or in motion mode.
- The **EXCODE** series is compatible with thermal transfer print engines including Sato, Zebra, Datamax and more.
- **EXCODE** has been designed to meet the typical needs of the industrial market, combining reliability, ease of use, accessibility and interchangeability.
- **EXCODE** is available with PLC or microprocessor.

 **Allen-Bradley** **SIEMENS** **OMRON**

Several application alternatives are available:

- **Air jet applicator (with or without piston):** for non-contact application on moving products;
- **Applicator with oscillating roller:** for contact application on products passing at high speed;
- **Piston applicator:** for contact application on stationary products, even in hollow areas;
- **Rotating arm applicator:** for front/back and/or angled placement on stationary or moving products;
- **Multi-format oscillating applicator:** for contact labelling of moving products, even with different dimensions.

Thanks to the flexibility of the **EXCODE** systems, we are able to identify any type of packaging: from kits to cardboard boxes, bundles and pallets.



EXA
SYSTEMS INC.

TECHNICAL SUPPORT

We wish a profitable and long term business relationship. This is why our technical support is able to support you and perform maintenance on the EXCODE.

OPERATOR INTERFACE

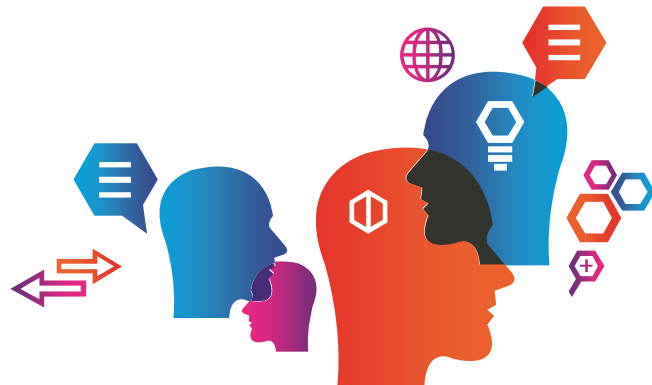
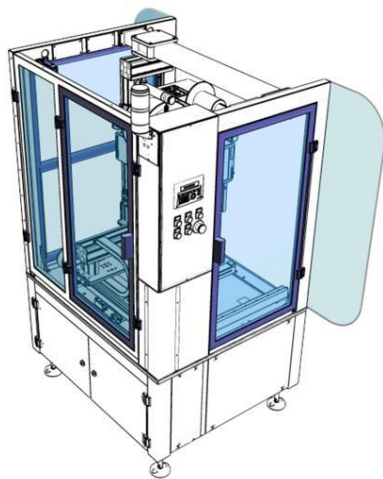
With user-friendly and simple tools, our professional services can develop the software applications needed to facilitate the creation and printing of labels.

TURNKEY SOLUTIONS

With EXA Systems, the term "turnkey" takes on its full meaning. We make sure that our solutions are easy to use and maintain.

For more information on our products and services, visit us on the Web at : www.exainc.com

Specifications



Characteristics:

- Stainless steel and anodized aluminum construction
- Microprocessor or PLC controlled interface
- Stainless steel « T » stand support
- Précision de l'étiquette : 1/32 de pouce
- Composantes pneumatiques standards
- Manivelle pour ajustement en hauteur " IN / OUT"

Printing:

- **Supports print engine:** Datamax, Sato and Zebra
- **Printing mode :** Transfert or direct
- **Resolution :** 203dpi (300 dpi optional)
- **Print width :** from 1" to 4"
- **Print length :** from 0.25" to 49"
- **Print speed :** 6" per second

Technical Specifications

• Electricity and Pneumatic:

- Voltage : 120 volts (50/60 Hz), 15 amp
- Separate circuit is recommended
- Air : 60 PSI, 1 CFM

• Dimension and environment:

- Dimension : 34L x 20H x 17P
- Weight : 55 lbs
- Operation temp : from 5°C to 40°C

• Labels:

- Roll diam.: 12" (16" optional)
- Core : 3"

• Application mode:

- Tamp
- Tamp blow
- Roll on
- Air
- Custom

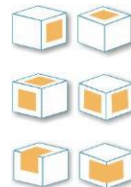


Options:

- Barcode reader
- End of labels / ribbons alarms
- Low labels / ribbons alarms
- Reject station

• Applications:

- Bottles and cylindric procuts
- Top / bottom of boxes
- Corner wrap
- From / back of boxes
- High speed
- Custom



Here are some features that can be added to the basic configuration, in order to solve specific problems

- **Recipe management** | Multiple labeling programs.
- **Large capacity** | Oversized and motorized reel carriers.
- **Label verification** | Laser reader, imager or vision system.
- **Control warning** | signalling and end approach display.
- **Integral protections** | Panel or industrial accident prevention cabinet.
- **Systems of routing and translation of products**

IDENTIFICATION

DATA COLLECTION

MACHINE VISION SYSTEM

TECHNICAL SUPPORT



MONTREAL - VANCOUVER - TORONTO
Tel 1.800.392.5383
www.exainc.com

01/21 rev 1